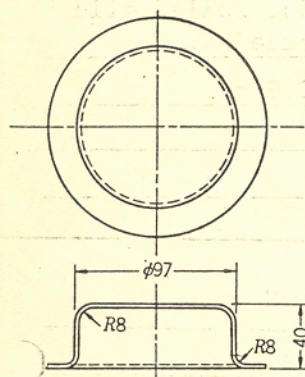
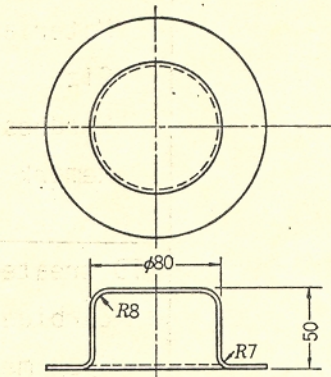


APPLICATION DATA

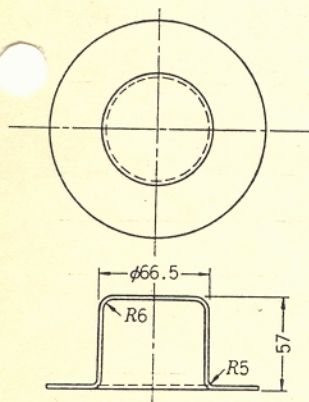
Name of part Drawing die	Source H. Ishikawa Puresu Gijutsu Vol.18, No.3 (1980) p.49
Mode of servicing Sheet metal stamping	



1st stage



2nd stage



3rd stage

Work material

Material Hot rolled mild steel
Size 2.3 mmt
Hardness
Remark

TD treated part

Carbide VC
Base metal D2
Harness of substrate
Remark

Working or servicing condition

Machine
Load
Stroke
Clearance
Lubrication
Temperature of work

Result	Base metal, treatment and hardness of the part to be compared W1 <input checked="" type="checkbox"/> Chromium plated
	Life and other evidences TD part 400,000 shots, Still usable with no damage The part to be compared 1st stage 60,000 shots/repair 2nd " 20,000 " 3rd " 20,000 " Profit obtained through application of TD Process