

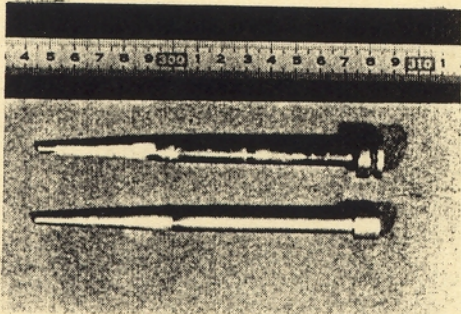
APPLICATION DATA

Name of part
Core pin

Source

Y. Iwai et al (Nippon Denso Co., Ltd.)
Puresu Gijutsu Vol. 23, No. 8 (1985) p. 52

Mode of servicing
Die casting



Core pin

Work material

Material SC114A (ASTM)
Size _____
Hardness _____
Remark _____

TD treated part

Carbide _____
Base metal _____
Harness of substrate _____
Remark _____

Working or servicing condition

Machine _____
Load _____
Stroke _____
Clearance _____
Lubrication _____
Temperature of work _____

Result

Base metal, treatment and hardness of the part to be compared
H13 Ordinarily hardened

Life and other evidences

TD part	15,000 shots/Repair
The part to be compared	300 shots/Repair
	900 shots/life

Profit obtained through application of TD Process
Increase in life